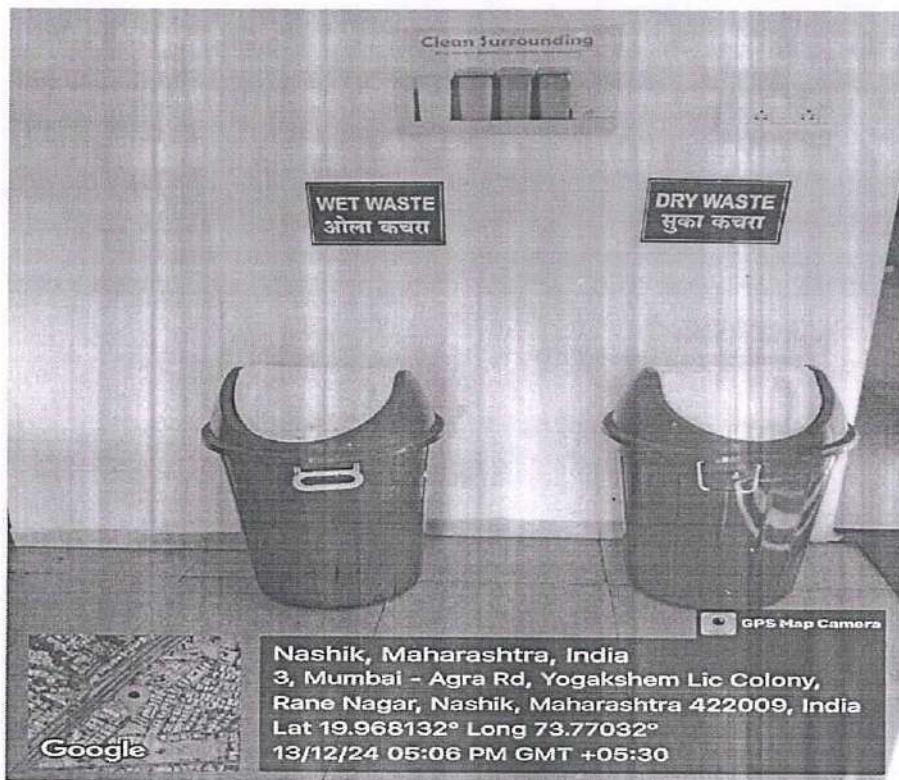


### 7.1.3 the facilities in the Institution for the management of the following types of degradable and non-degradable waste

#### Solid waste management

The waste generated through routine activities in the college, such as paper, plastics, glass, and food, is managed effectively. The college utilizes color-coded garbage bins—green for wet waste and blue for dry waste—strategically placed in the canteen and other areas. The collected waste is regularly disposed of through the Nashik Municipal Corporation's "Ghanta Gadi" waste collection vehicle.



Dry and wet waste collection system

#### Liquid waste management

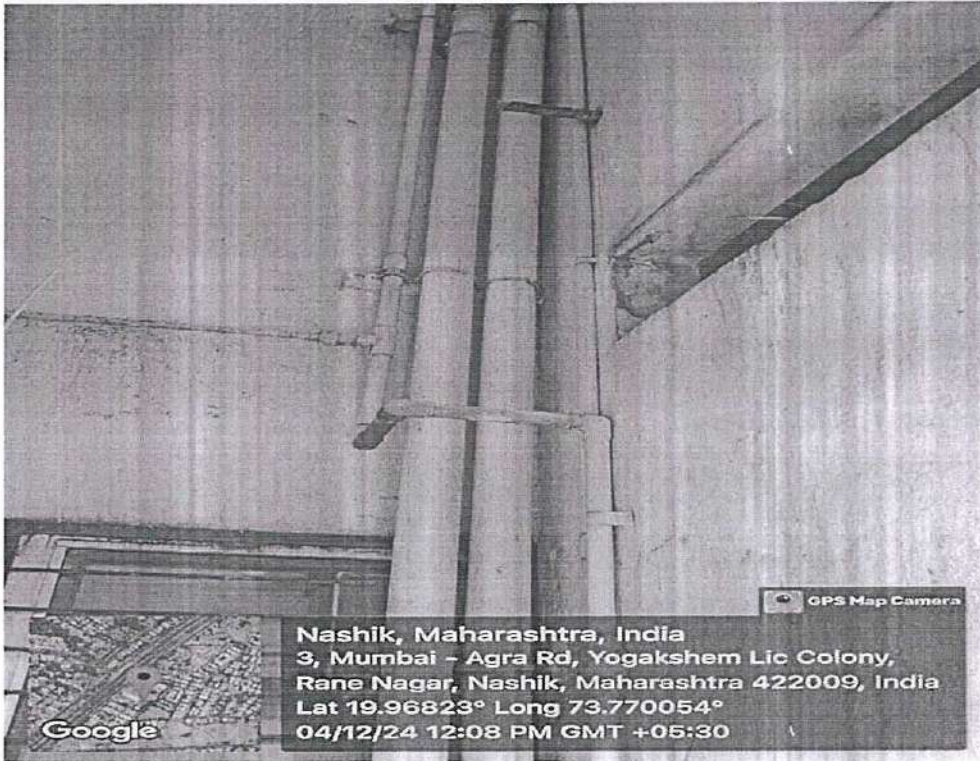
The institution is committed to maintaining an environmentally sustainable campus by implementing an efficient liquid waste management system. This system ensures that all liquid waste generated on campus, including wastewater from restrooms, kitchens, and laboratories, is treated and disposed of responsibly to minimize its environmental impact.

**COORDINATOR**

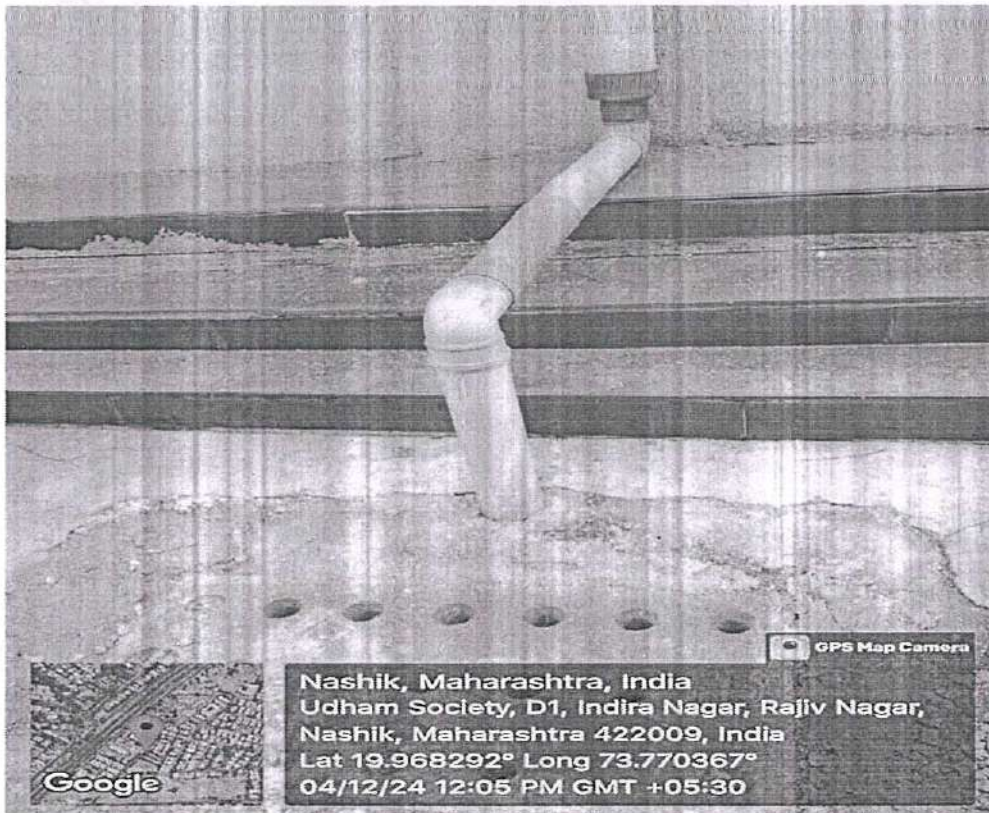
Internal Quality Assurance Cell  
Ashoka Business School, Nashik

**DIRECTOR**

Ashoka Business School  
Nashik



Pipe lines for rain water



Rain water supplied directly in ground through pipes

*M. K. Kulkarni*  
**COORDINATOR**  
 Internal Quality Assurance Cell  
 Ashoka Business School, Nashik

*S. S. Sule*  
**DIRECTOR**  
 Ashoka Business School  
 Nashik





**Rain water harvesting system board**



**Liquid waste drainage**

*Handwritten signature*

**COORDINATOR**

Internal Quality Assurance Cell  
 Ashoka Business School, Nashik

Source: Network/ABSSERVER/ABS/24-25/IQAC/AQAR 23-24 /CR7

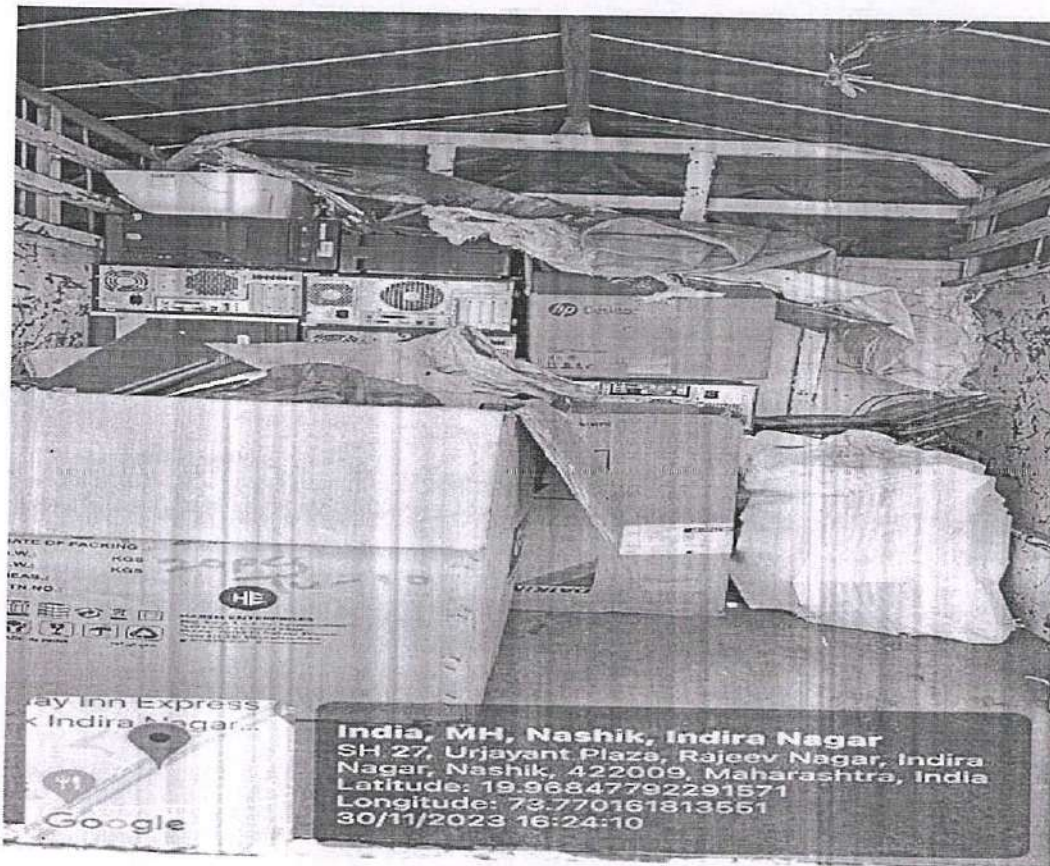
*Handwritten signature*

**DIRECTOR**  
 Ashoka Business School  
 Nashik



## E-waste management

ABS manages electronic waste (e-waste) such as flip-flops, memory chips, motherboards, compact discs, cartridges, and components from devices like computers, radios, TVs, phones, printers, fax machines, and photocopiers. Instead of purchasing new equipment, the college opts for a buyback option for technology upgrades. Any e-waste that cannot be reused or recycled is disposed of through Techeco Company, Nashik.



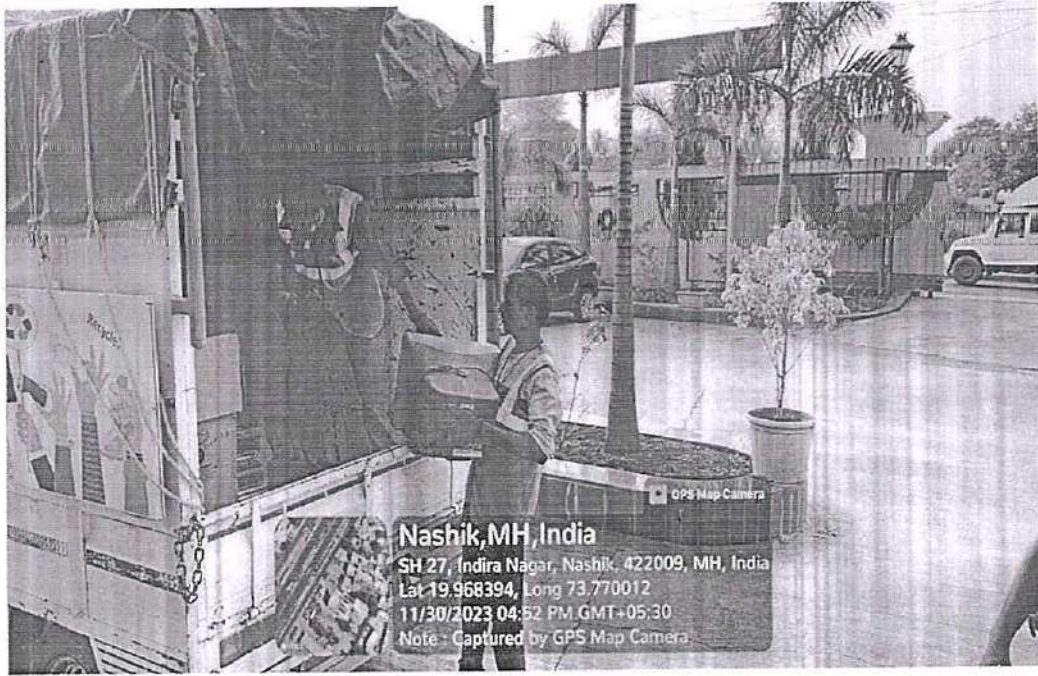
30+Kgs E-waste collected and handed to Tech eco company

*N. M. Kulkarni*  
**COORDINATOR**

Internal Quality Assurance Cell  
Ashoka Business School, Nashik

*S. S. S. S.*  
**DIRECTOR**  
Ashoka Business School  
Nashik





Resources from Techeco company collecting E-waste from ABS



Handing over of E waste

*W. Mittal*  
**COORDINATOR**  
 Internal Quality Assurance Cell  
 Ashoka Business School, Nashik

*Suresh*  
**DIRECTOR -**  
 Ashoka Business School  
 Nashik